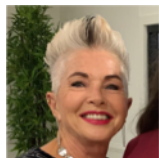


Byron Bay Bridge Club Newsletter

Keeping you up to date with monthly club news



MARCH 2023

President's Report

Greetings to you all,

Wow its March already. I'm even more surprised that 12 months have passed since I took over at the helm as president of our bridge club. I have learnt so much about running a social club and learning about people and being a part of a committee.

But it's AGM time again and as its YOUR club you have the opportunity to nominate and vote for the committee of your choosing. Roles and titles are irrelevant as the committee works as a team for the benefit of the club and the club members. New people bring new ideas which is always very healthy for a small club. So please show your support to your club by nominating or be nominated for a role. Committee meetings are held every 2-3 months before normal play. Proxy voting is now available so make your vote count. We have some major decisions to make re our constitution before the election of the 2023-2024 committee.

You will have all received your email from our secretary Leo re the three options regarding a Friday afternoon "home" for our club to play at. Your vote is VITAL and will be decided by online voting NOT at the AGM so please make your opinion heard by sending Leo a reply by email. Full members AND associated members are entitled to vote.

See you around the bridge table and

Happy bridge playing
Eda

We meet every Friday at the Cavanbah Centre Ewingsdale Rd Byron Bay. We ask that you be seated by 12.15pm for play to commence at 12.30.

Join us for a social time afterwards BYO + glass

Directory

President Eda Bridgeman 0411 872 423/66930359
Vice President Brian Sundstrom 0429 311 830
Secretary Leo Prendergast 0429 672 262
Treasurer Greg Farrell
Assistant Treasurer Edna D'Cruz
Partner Co-ordinator Peter Roger 0421635305
Masterpoints Helen Baker & Edna Millard
Welfare Officers Kay Milne & Peter Kiernan
Afternoon Teas Patricia Ellis 66870441
Recorder Peter Brosnan 0411 121 281
Meet & Greet on Friday's Eric Bridgeman

Committee Members: Kay Milne, Patricia Ellis, Edith MacAuley

MARCH REMINDERS

**WINE TASTING after bridge
FRIDAY 3RD \$5 PER PERSON**

HOST BRIAN SUNDSTROM

COMPUTER TRAINING 3rd

**Please show your support
come along and learn...it's not hard
(no directing required)**

11am 17th

AGM 24th

**during our afternoon tea break
S.H.I.F.T. Project recycled clothing
sale fundraiser. Donation date T.B.A**



HAPPY BIRTHDAY WISHES FOR MARCH

3RD GREG FARRELL

5TH JANE FULFORD

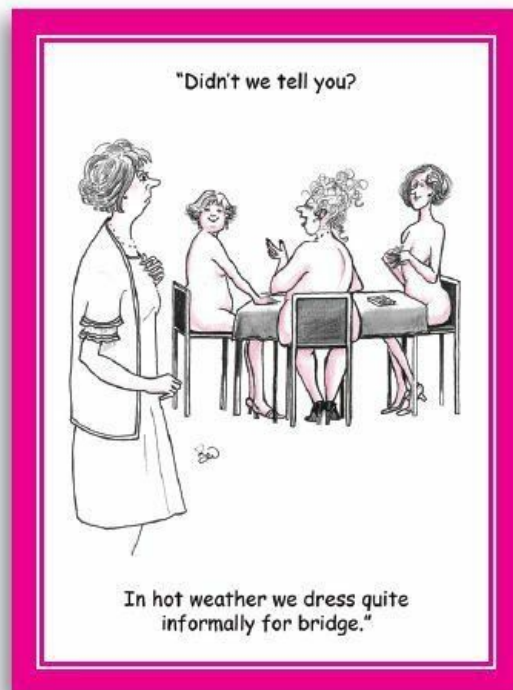
28TH LORRAINE MCKENZIE

and to all those we don't know about



"TRUST ME, JOHN! JUST BECAUSE YOUR BRIDGE PARTNER DUMPS YOU...DOESN'T MEAN I WILL!"

**MARCH'S BRIDGE HUMOUR
YES A BIT CHEEKY
(MAYBE TOO MANY OF THOSE
BRUNSWICK CHEEKY SHOWS)**

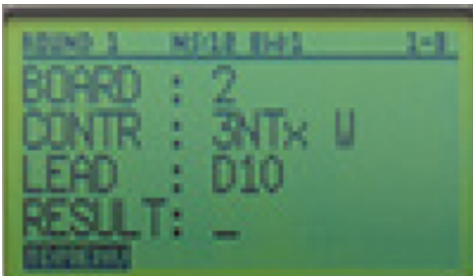


INTERESTING AS I OFTEN HEAR PLAYERS ASK “WHY DO WE HAVE TO PUT THE LEAD CARD IN”



Bridgemates - Lead Card Validation *Mark Miller*

For some time now we have been entering the lead card into the Bridgemates. The software made it an option which was adopted by Ballina for a number of reasons. Some members like to study the online results to see whether the choice of lead affected the contract. Perhaps others like to see what the more experienced players led when they faced the identical decision. But for directors the information is helpful in examining the result anomalies that our scoring program Compscore2 displays at the end of the session.

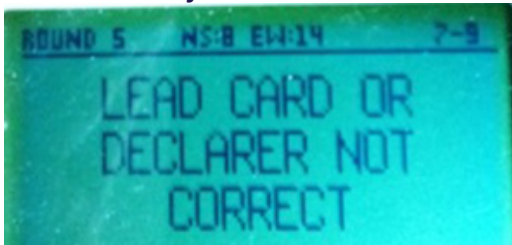


Bridgemate with lead

An example might be a contract of 4H by North making 11 with both sides vulnerable. The score shows as 650. But Compscore says this is suspicious as NS only have 4 trumps! If the players concerned are still present then they can be consulted. But if they have all left, the director is not supposed to change a score that has been accepted without player consultation. Suppose the actual result was 4H by East making 11 with a score of -650 to NS. In checking the Bridgemate, West had not noticed the absence of the negative sign or the incorrect declarer. In such situations the director will look at the lead card. If it was a card that belonged to South then there is no problem in making the sensible correction to 4H by E. This avoids a phone call that evening and having to make a subsequent change, reprinting and republishing the results.

It follows that it is important for the lead card to be entered correctly and it is great to be able to report that by querying this year's data, I found that there has been a 95% success rate.

But now we can get a 100% success rate as software enhancements have the hand records available to the Bridgemates. So an error message will appear on the screen if the lead card is not consistent with the data in the hand record. This might be because the declarer has not been entered correctly or the declarer is correct but the indicated card does not belong to the hand that is on lead. This feature has been active since 18th September and has had the planned benefits plus early detection of a board that was fouled and two that were played reversed - north had the south cards etc. Some Bridgemate operators have the practice of entering the required information at the end of the hand. In doing so the operator may forget the lead and have to waste time questioning the other players. So please enter the contract, declarer and lead card as soon as possible. The latter ideally immediately after it is faced. All part of saving time at the table.



Error notification

NOTE: It would be preferable if any error concerning the lead card was detected immediately after the information was entered into the Bridgemate. But this introduces the possibility of cheating by a Bridgemate operator who is also declarer for that hand. For this reason the error message like the one shown will only appear after EW has clicked on the Accept button. The error message will only stay on the screen for short time and then the screen will revert to result entry where the operator can make the required changes. The Bridgemate will not advance to the next hand until the lead card is correct and the data has been accepted successfully.

The overall goal is to have less anomalies detected by the scoring program so faster finalisation of the results. Stay at the club if possible to socialise, enjoy a drink and congratulate the winners who will hopefully be announced quickly.

Bridge is primarily a game of language and logic. Of course, judgment and empathy play large roles, as does luck, at least in the short term. These puzzles feature language and logic. The idea is to deduce a significant amount of information from the bidding and/or opening lead.

Follow the logic trail in these bridge puzzles.

10. Defending notrump, partner has raised your 1♠ opening to 2♠, and you lead a fourth-best spade in the diagram:

North (Dummy)

♠ Q 8

West

♠ J 7 5 4 2

Partner plays the 10, declarer the queen. Where are the missing spades?

SOLUTION

Declarer has ♠Q 9, partner A–10–8. Partner denied the 9 — third hand follows with lowest of touching cards. Since partner showed three spades by raising, declarer's doubleton becomes clear. If you regain the lead and decide to play a spade, play the jack to save a spade trick by smothering declarer's 9.

ODE TO BRIDGE

PENNED BY ERIC BRIDGEMAN

THEY SAY IT'S ONLY A SILLY GAME
BUT THERE IS NOTHING QUITE THE SAME
BRIDGE IS ITS COMMONLY KNOWN NAME
LESSONS MUST BE FORMALLY HAD
AFTER WHICH YOU'LL STILL BE BAD
BUT IT IS FAR BETTER THAN BEING A CAD
THOU ONE NEED NOT BE PHYSICALLY FIT
AND DESPITE IT BEING A WORLD WIDE HIT
IT CAN STILL GIVE ONE THE TOTAL SHITS
I HONESTLY DON'T REALLY CARE
BUT THOUGHT THESE LINES WITH YOU I'D SHARE
AND THUS MY SOUL TO THEE I BARE